



Regd. Office : Ekana Sportz City, 2nd Floor, Eldeco Corporate Chamber-2, Vibhuti Khand, Gomti Nagar, Lucknow. 226010, Uttar Pradesh ☎ 0522 2981234, 0522 4232555  
Site Address : Ekana Sportz City, Sector 7, Gomti Nagar Ext., Amar Shaheed Path, Lucknow. 226010, Uttar Pradesh ☎ 0522 2982088, 0522 2982089  
☎ +91 7307095100 , 7307095101 ✉ sales@ekana.com 🌐 www.ekana.com Follow us on :

Project RERA Registration No.: UPRERAPRJ249516 (Ekana Antalya) | Available at - [www.up-rera.in](http://www.up-rera.in)

Disclaimer: The views shown in the brochure may vary in accordance with the final approved map and does not guarantee the same. All intending purchaser/s are bound to inspect all plans and approvals and visit project sites and apprise themselves of all plans and approvals and other relevant information and nothing in this brochure is intended to substitute to the intending purchaser the actual plans and approvals obtained from time to time. The relationship between the Developer and the actual customer will be governed strictly by the agreements to be executed from time to time and not on the terms of this Brochure. All details are indicative only. This brochure is merely conceptual and is not a legal document. It cannot be treated as a part of the Annexure of final agreements that may be executed from time to time. The Developer reserves the right to change, amend, modify the contents of the brochure and architectural specifications during development stages. Finishing material might vary in project due to availability of material during the period of construction but specifications would remain same. Allottee(s) has to accept such variation(s). The Developer/Management holds no responsibility for its accuracy and shall not be liable to any intending purchaser or any one for the changed/alteration/improvements so made. This carries entire responsibility and no warranty is expressly or impliedly given that the completed development will comply in any degree with such error's/implication as depicted. The landscape, water bodies, details of lobbies, features & facilities of the common club/community centre/any other area, furniture, accessories, paintings, items, electronic goods, fittings/fixtures, decorative items, false ceiling including finishing materials, specifications, shades, stairs etc. shown in the pictures are only indicative in nature and for illustrative purpose only and does not form a part of the standard specification. Recipients are advised to apprise themselves of the necessary and relevant information of the project prior to making any purchase decisions. The sale is subject to terms of application form and agreement for sale. All specifications of the unit shall be as per the final agreement between the parties.

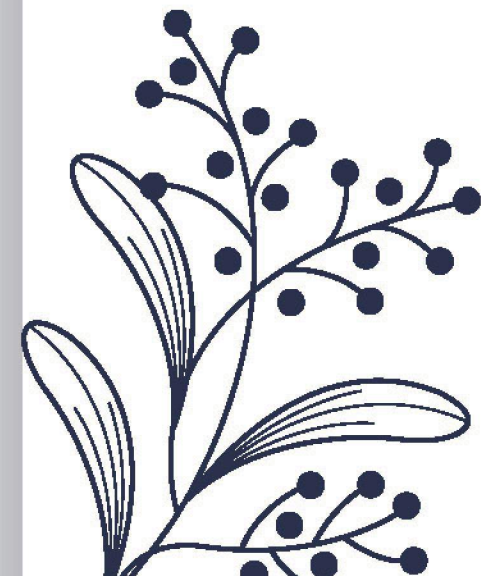


  
ekana

*Antalya*

Abode in Peace, Calm & Harmony

Euphoria  
*Above*  
All





Ekana Sportz City is spread over 137 acres and is India's first unique sports-inspired community living. It is the State Government of Uttar Pradesh's dream project, developed under public private partnership (PPP) equipped with International cricket stadium, international academy, multi-sports indoor outdoor stadiums along with residential, commercial, hotels and hospital in the Sportz City.



“ Taking you on a voyage to peace, calm and harmony is what we intended while laying the foundation to our newest residential offering 'Antalya'.

'Antalya' means 'Break of Day' and so it is, promising you a remarkable living experience that's simply unparalleled than any of its peers. Majestically shimmering with world class amenities, this accommodation is beautifully complemented by a picturesque landscape of lush greenery alongside the river bed of Gomti.

Offering magnificent 4BHK Flats, Pent Houses and Sky Villas in an exquisite setting of Ekana Sportz City 'Antalya' is undoubtedly one of the spectacular residential offerings within the nation.

Bringing this beautiful dream to reality was not easy, as it required lot of courage, persistence and perseverance which we poured devotedly to make it happen.

Therefore, I take this occasion to welcome you all and be a part of this sprawling community which strikes a right balance between opulent living amenities and world class sporting facilities.

Come to 'Antalya' and find your abode to peace, calm and harmony! ”

*From Chairman's Desk*



# *An Experience* **EXTRAORDINARE**

Transcending boundaries of lavish conveniences aptly complemented by world class sporting facilities in the lap of nature, Ekana Sportz City is a 137 acres sports inspired community in the Heritage city of Lucknow.



Outdoor  
Football Ground



Residential  
Group Housing/Villas



State of the Art  
Healthcare Facilities



Five Star  
Hotel/Hotels

*Antalya*





## Ekana International Cricket Stadium

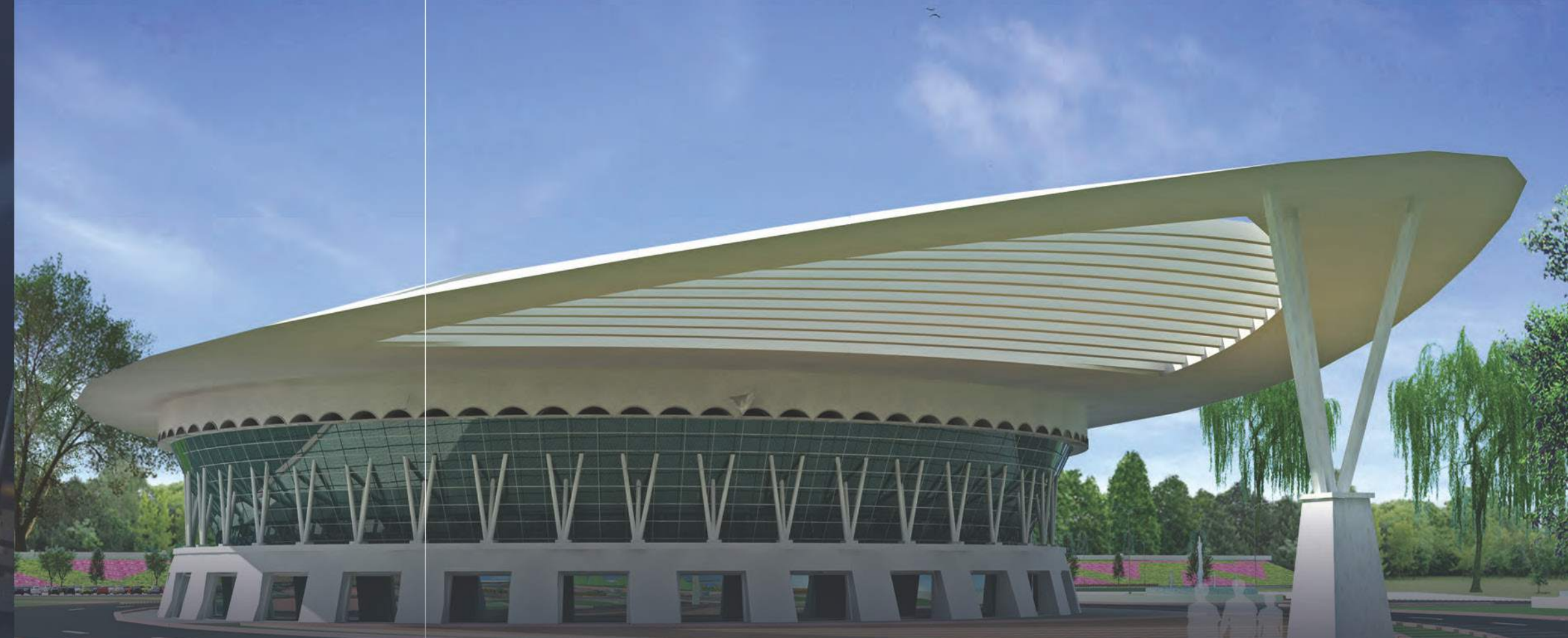
Resonating grandeur, architectural innovation and sheer magnificence, the Ekana International Stadium is a beacon of glory and pride for the heritage city of Lucknow.

With a whopping seating capacity of 50,000 people, the stadium is approved by the ICC and BCCI. It offers an array of advanced, next-generation facilities for the players, officials, VIPs, spectators and the media.

**2**  
ICC STANDARD  
CRICKET  
GROUNDS

**1**  
FIFA STANDARD  
FOOTBALL  
GROUND

**8**  
WTF STANDARD  
TENNIS  
COURTS



## Air Conditioned Indoor Multi Sports Complex

Ekana Air Conditioned Indoor Multi Sports Complex has become the favourite sports destination for many sports federation in a very short time because of its full service facility, using the sports science in the complex. It has International standard courts for Squash, Badminton, Basketball, Volleyball alongwith Table-Tennis Bays.

**8**  
WBF STANDARD  
INDOOR  
BADMINTON  
COURTS

**2**  
FIBA STANDARD  
BASKETBALL  
COURTS

**11**  
WSF STANDARD  
SQUASH  
COURTS

**2**  
FIVB STANDARD  
VOLLEYBALL  
COURTS

**10**  
ITTF STANDARD  
TABLE  
TENNIS  
COURTS



*Introducing*  
*Antalya*

A tranquil and serene urban destination that gifts amicable moments to rejuvenate yourself in harmony with nature.



# *Aesthetics of* **ETERNAL BRILLIANCE**

Ekana Antalya offers a choice of sophisticated and convenient 4 BHK Apartments, Ground Villas and Sky Villas that bring to you a state of calmness, peace and tranquility in the lap of mother nature. Having designed by Skyline Architectural Consultants, this lavish accommodation has been conceptualized in a manner that lets you embrace special moments with your family and loved ones.



**Landscape Garden**



**Children's Play Area**



**Jogging Track**



**Pool Deck**



**Kids Pool**



**Amphitheatre**



**Gymnasium**



**Yoga/Activity Room**



**Multipurpose Hall**



**High Ceiling Entrance Lobby**



**High Speed Elevators**



**EV Charging**

# Huge Entrance Lobby & Central Atrium

Step into grandeur of lavish interiors with a huge spacious entrance lobby and atrium that gives you a feel of luxurious magnanimity.



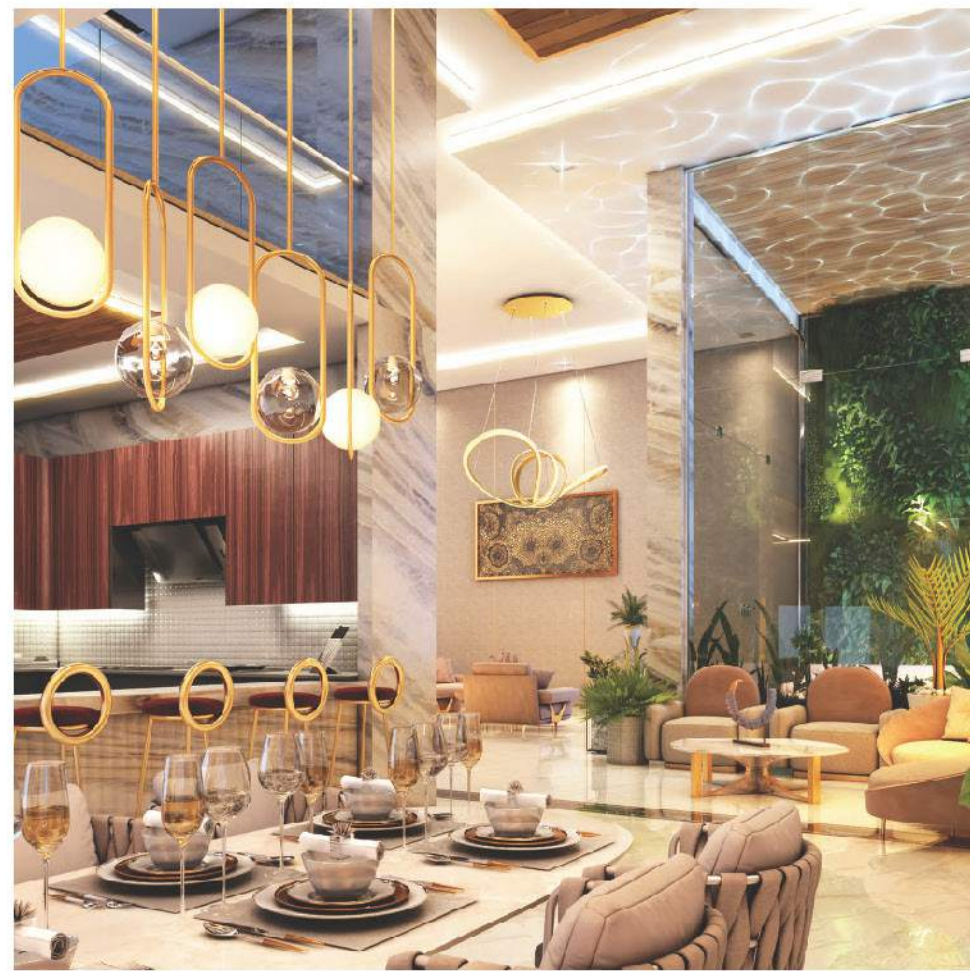
# Affluent 4 BHK Apartments

Greet opulence at home with luxurious apartments beautifully designed for a fancy lifestyle.



# Spectacular Ground Villas & Sky Villas

Gift yourself awe-inspiring panoramic city views reaching beyond skylines with our majestic Pent Houses and Sky Villas, the epitomes of excellence strategically located in an exemplary natural setting.





# AMENITIES & Lifestyle

---

Raise a toast to sophisticated evenings at our magnificent 'Antalya Club House' that mingles with refinement and grace.



## Yoga & Fitness Centre

Reignite your Chakras and establish a connect with your soul amid the calm and lush green ambiance of Antalya.



## Card Room, Billiards & Snooker Table

Spare some memorable time with friends while testing your precision skills over a game of cards, snooker or billiards.





## Departmental Store & Party Hall

Among the list of amenities, Antalya also offers best-in-class services for your daily grocery needs, along with a majestic Party Hall for get-togethers with family & friends.



## Multi Level Security

A secured and gated community with multi level security system which keeps a 24x7 surveillance for the safety of your loved ones.

# *Antalya*

## SPECIFICATIONS

### *Super Structure*

R.C.C. FRAMED STRUCTURE: R.C.C. framed structure to withstand wind & seismic (Zone III) loads  
WALLS: Reinforced shear walls and/or cement concrete blocks

---

### *Doors & Windows*

MAIN DOOR:

Teak wood frame with veneered flush shutter, finished with melamine polish and reputed hardware

INTERNAL DOORS:

Hard wood frame with veneered flush shutter, finished with melamine polish and reputed hardware

TOILET/UTILITY DOORS:

Granite frame with veneered/ laminate flush shutter, finished with melamine polish and reputed hardware

SLIDING DOOR:

UPVC/Bronze anodised aluminium alloy door frame with clear float glass panelled sliding shutters, and hardware of reputed make

WINDOWS:

UPVC/Bronze anodised aluminium alloy window system with clear float glass and suitable finishes as per design, and mosquito mesh track

GRILLS:

Aesthetically-designed Mild Steel (MS) grills with enamel paint finish

---

### *Kitchen*

Granite platform with stainless steel sink, water purifier, electric chimney, provision for PNG

---

### *Bathrooms*

Counter top washbasin (vanity type) with single lever mixer EWC with flush valve of Villeroy Boch Single-lever wall mixer with bath spout and shower of premium brand. Provision for geyser in all bathrooms Chrome-plated faucets of premium brand

## Wall Finishes

### EXTERNAL:

Textured/Smooth finish with two coats of exterior emulsion paint of reputed make

### INTERNAL:

Smooth putty finish with two coats of premium acrylic emulsion paint of reputed make, over a coat of primer

---

## Bedrooms

FLOORING / SKIRTING: Wooden laminated flooring in master bedroom. Other bedrooms vitrified tiles of minimum 600x600mm size.

WALL FINISHES: Acrylic emulsion on POP punning

CEILING: Oil bound distemper

---

## Flooring

### DRAWING, LIVING, DINING AND KITCHEN:

1200x600 mm. Polished glazed vitrified tiles of reputed make

### BATHROOMS:

Glazed vitrified tiles of reputed make

### STAIRCASES:

Natural stone

### CORRIDORS:

Glazed vitrified tiles of reputed make

### BALCONIES:

Glazed vitrified tiles of reputed make (wooden finish)

### UTILITIES:

Ceramic/vitrified tiles of reputed make





## *Tile Cladding/Dadoing*

### KITCHEN:

Polished glazed vitrified tiles (PGVT) of reputed make up to 2 feet height above kitchen platform.

### BATHROOMS:

Dade up to lintel height using glazed ceramic/vitrified tile of reputed make

### UTILITIES:

Ceramic tiles dado up to 5' height

---

## *Telecom*

Intercom facility for all apartments

Telephone points in drawing and master bedroom

---

## *Cable TV*

Provision for Cable TV connection in drawing, Living and all bedrooms

---

## *Internet*

Wi-Fi internet provision for all apartments

## *Security/BMS*

Round-the-clock security system

Panic button and intercom facility provided in lifts connected to security

Comprehensive security system with cameras at necessary locations

PARKING MANAGEMENT: Intelligently-designed car parks, signage boards and equipment at strategic locations

---

## *Fire & Safety*

Fire hydrant and fire sprinkler system on all floors and in basements

Fire alarms and smoke detectors in all apartments.

Public address system in all floors and parking areas (basements), Control panel at main security

---

## *Electrical*

Concealed copper wiring of premium brand, Power outlets for geysers in all bathrooms

Power plugs for cooking range and appliances (chimney, refrigerator, microwave oven, mixers/grinders, geyser, and water purifier) in kitchen.

Power outlets for washing machine and dishwasher in utility area

Three-phase supply for each unit, with individual prepaid meter

Miniature Circuit Breakers (MCB) of premium brand for distribution boards

Modular switches of reputed make

POWER BACK UP: 100% DG set back up, with acoustic enclosure and AMF

---

## *Lifts*

4-High-speed automatic passenger lifts with rescue device and V3F for energy efficiency

Granite/marble cladding entrance

Two service lifts with V3F for energy efficiency

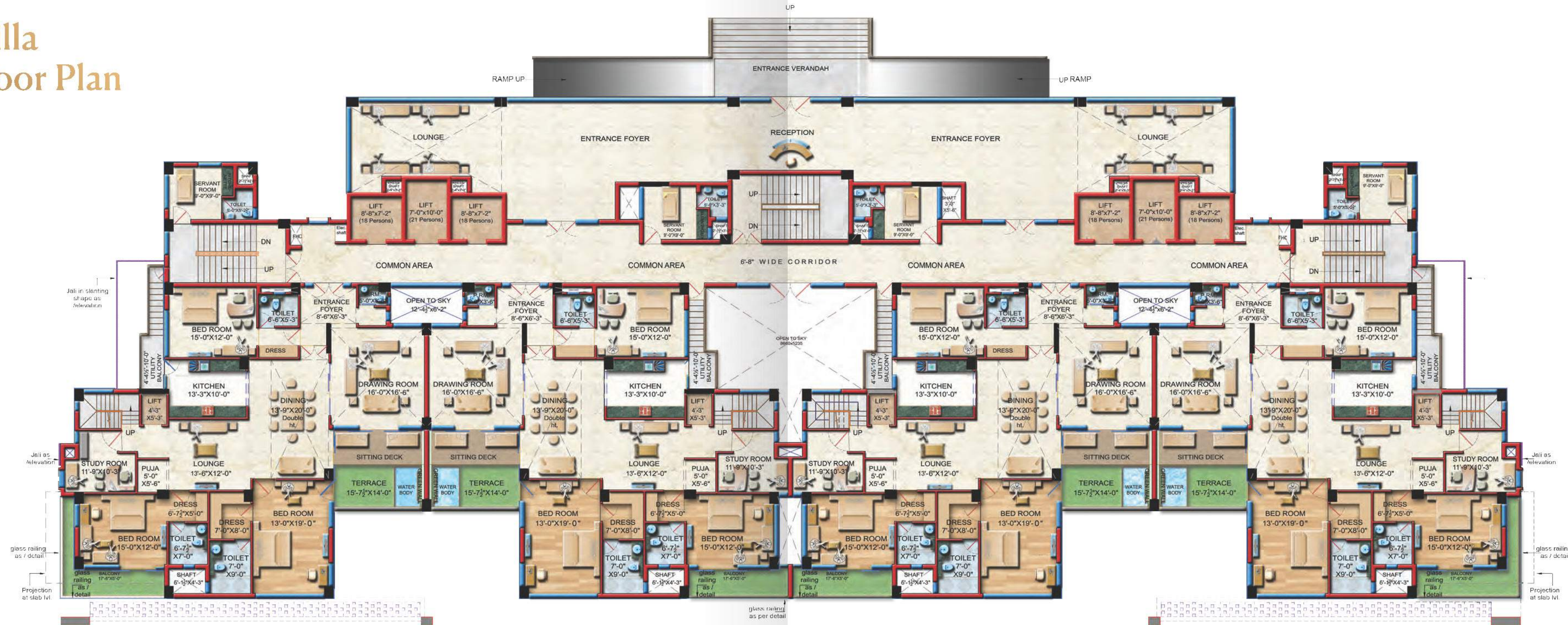


*Antalya*  
FLOOR PLAN



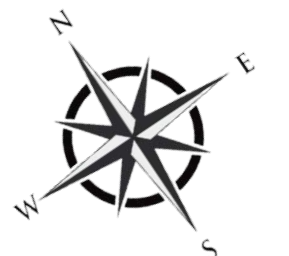
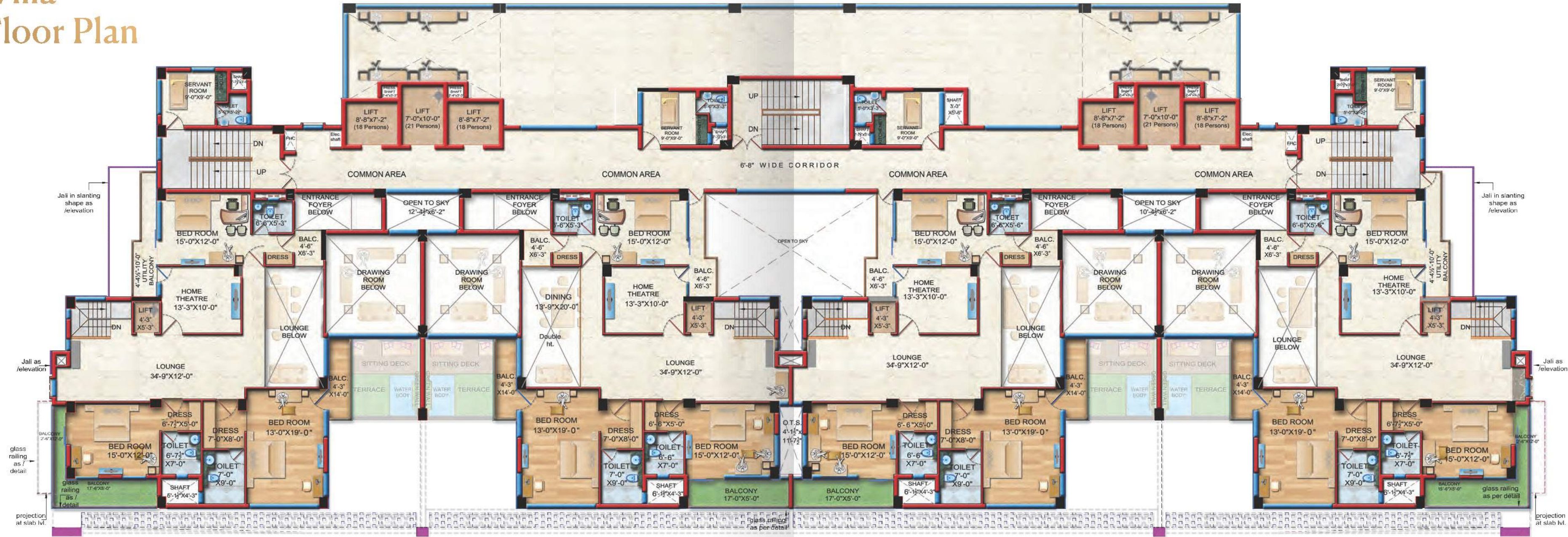
# Ground Villa Typical Floor Plan

## Level - 1



# Ground Villa Typical Floor Plan

## Level - 2



# Ground Villa Unit A Floor Plan

## Level - 1



## Level - 2



Carpet Area 3486.03 Sq.Ft.  
 Covered Area 5465.64 Sq.Ft.  
 Super Area 6941.36 Sq.Ft.





# Unit Plan 4 BHK

## Type - A



Carpet Area **2191.55 Sq.Ft.**  
 Covered Area **2870.01 Sq.Ft.**  
 Super Area **3644.91 Sq.Ft.**

## Type - B



Carpet Area **2190.58 Sq.Ft.**  
 Covered Area **2827.70 Sq.Ft.**  
 Super Area **3591.18 Sq.Ft.**

# Sky Villa Unit A Floor Plan

## Level - 1

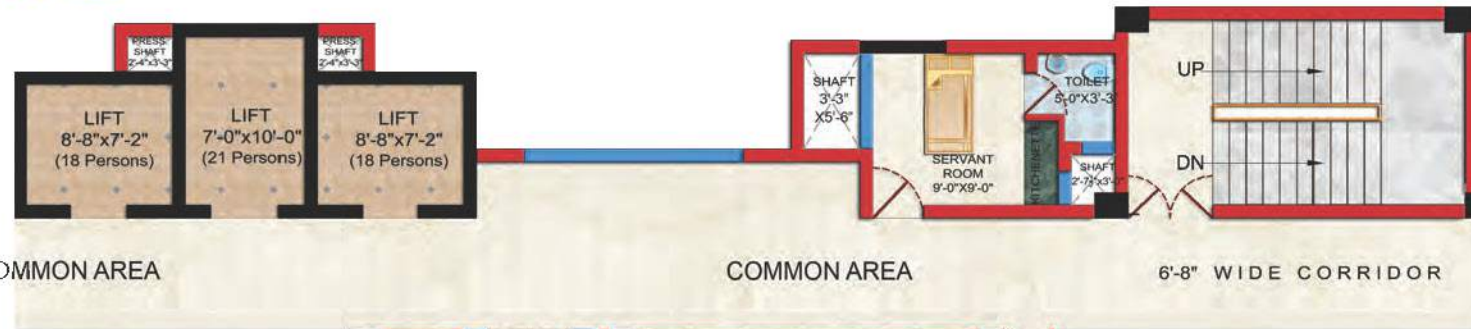


## Level - 2

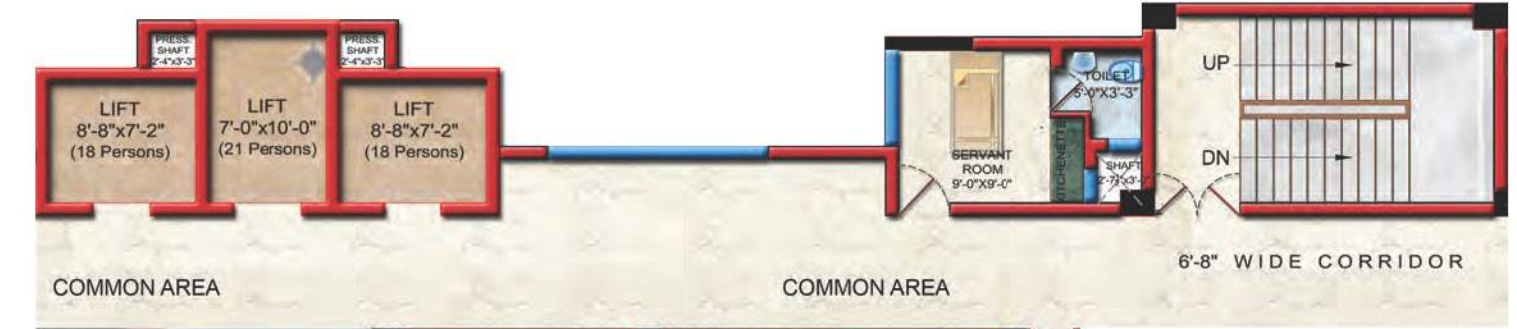


Carpet Area **3484.09 Sq.Ft.**  
 Covered Area **5465.64 Sq.Ft.**  
 Super Area **6941.36 Sq.Ft.**

# Sky Villa Unit B Floor Plan



## Level - 1



## Level - 2



Carpet Area **3483.55 Sq.Ft.**  
 Covered Area **5381.03 Sq.Ft.**  
 Super Area **6833.91 Sq.Ft.**

# A Spotlight On CONVENIENCE

7 km.

Gomti Nagar Commercial Hub

14 km.

Hazratganj

12 km.

Charbagh Railway Station

18 km.

Amausi International Airport

12 km.

Faizabad Road

10 km.

Outer Ring Road



## Disclaimer

You are requested to independently, either directly or through your legal/financial consultants, thoroughly verify all details/documents pertaining to this project as available on <https://uprera.gov.in> under the name "Antalya" (bearing UPRERA registration number UPRERAPRJ249516), including the Approved Layout With Phasing/User Superimposed; the proforma Agreement for Sale, which details the fixtures and fittings, the common areas, facilities and amenities; the approvals and permissions; the title certificate and details of encumbrances; and, the manner in which the entire layout is proposed to be developed.

This brochure does not constitute an offer and/or acceptance and/or contract and/or agreement and/or transaction and/or any intention thereof and/or a disclosure under any statute of any nature whatsoever.

The layout plan, the orientation of buildings/towers/wings/structures, the common areas, facilities and amenities, the fixtures, fittings, soft furnishing/furniture, gadgets, technology, information, pictures, images and visuals, drawings, specifications, sketches and other details herein are merely a creative imagination and an Architect's impression and are only indicative. The developer reserves the right to change any or all of these in the interest of the development as permissible under law. These should not be construed in any manner as disclosures under the provisions of the Real Estate (Regulation and Development) Act, 2016 and the Rules there under and/or applicable law, and the relevant applicable disclosures shall be made at an appropriate time.

All dimensions mentioned in this brochure may vary/differ due to construction exigencies. Actual product may vary/differ from what is indicated herein. Further, dimensions mentioned on the floor plans are as per the plans approved by the Municipal Corporation of Lucknow and the same are subject to construction exigencies.

The photographs contained herein may be stock/standard photography used for the purpose and may have been taken at a location other than the project site and are used to indicate a conceptual lifestyle.

No representation or warranty is made or intended as to the accuracy or completeness of information herein or as to its suitability or adequacy for any purpose.

Please examine all documents and information uploaded by the developer on the website of RERA at <https://uprera.gov.in> under the project name "Antalya" (bearing UPRERA registration number UPRERAPRJ249516) to understand the documents and information in all respect.